



**Barts Health**  
NHS Trust



# Barts BioResource

## March 2018 Newsletter



# Information

*Bart's BioResource (BBR) news and views* is a monthly newsletter that showcases our research recruitment for the different layers of consent (data, biosamples, tissue donation  $\pm$  future contact) and our key locations where consenting currently takes place.

The *BBR* newsletter shares information on new sub project developments and also provides patient and staff feedbacks relevant to our research project.

The *BBR* can often support disease specific research projects and questions. If you would like to find out more or have any comments on this newsletter, please contact [maudrian.burton@bartshealth.nhs.uk](mailto:maudrian.burton@bartshealth.nhs.uk)

Access to the project can be obtained by completing the below link

<https://redcaphh.c-cloudservices.net/surveys/?s=yzBAF4pBrY>



# Patient Feedback



Barts Health  
NHS Trust

“ I feel happy that I can support a research study, I have wanted to participate in research but did not want to travel back to the hospital. Being able to opt out of future contact was ideal.”

Anonymous participant

“ The information on the Patient Information Sheet differs from the consent form- I am not comfortable joining the study because of this.”

Anonymous patient



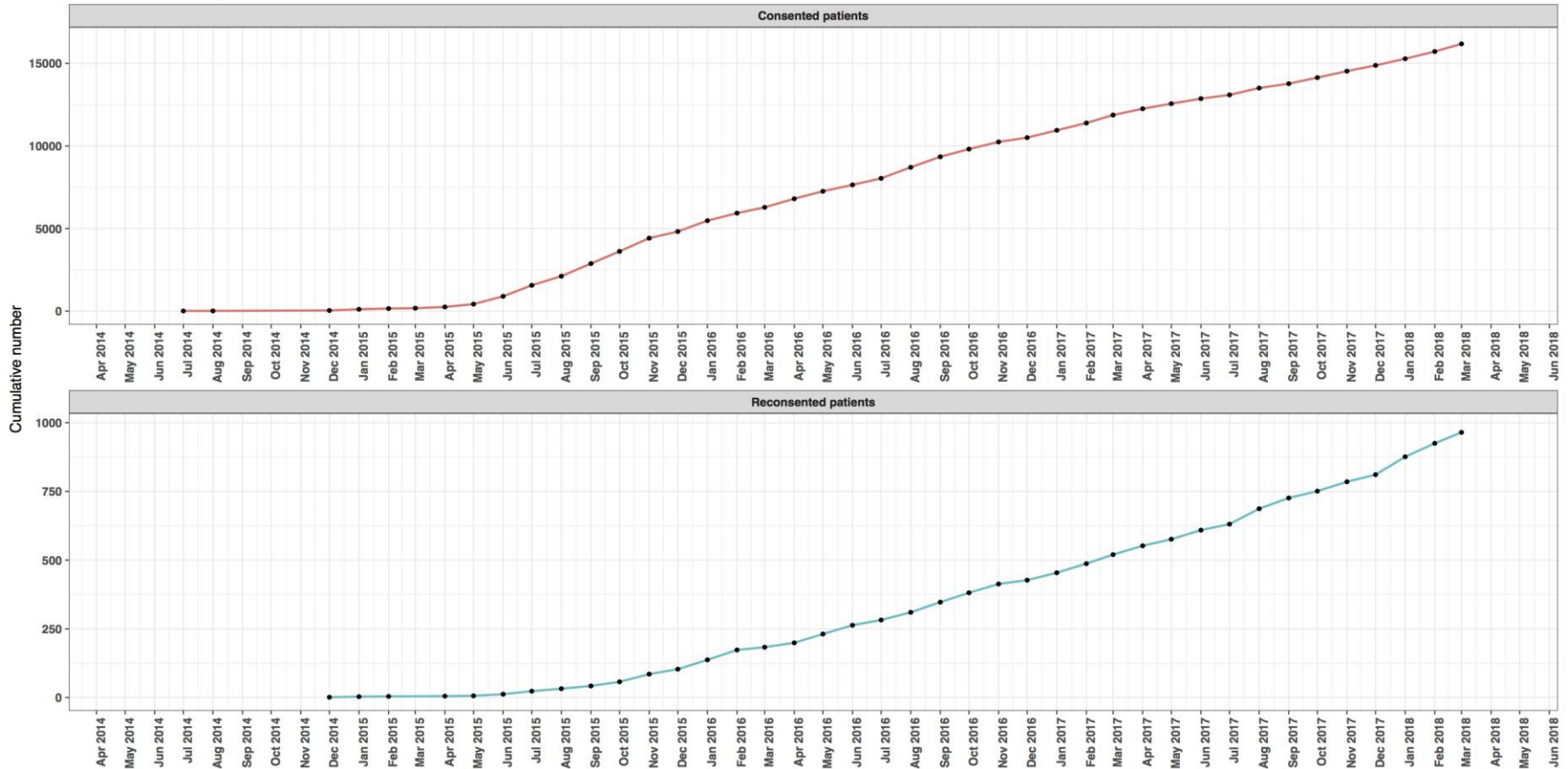
# Cumulative Recruitment



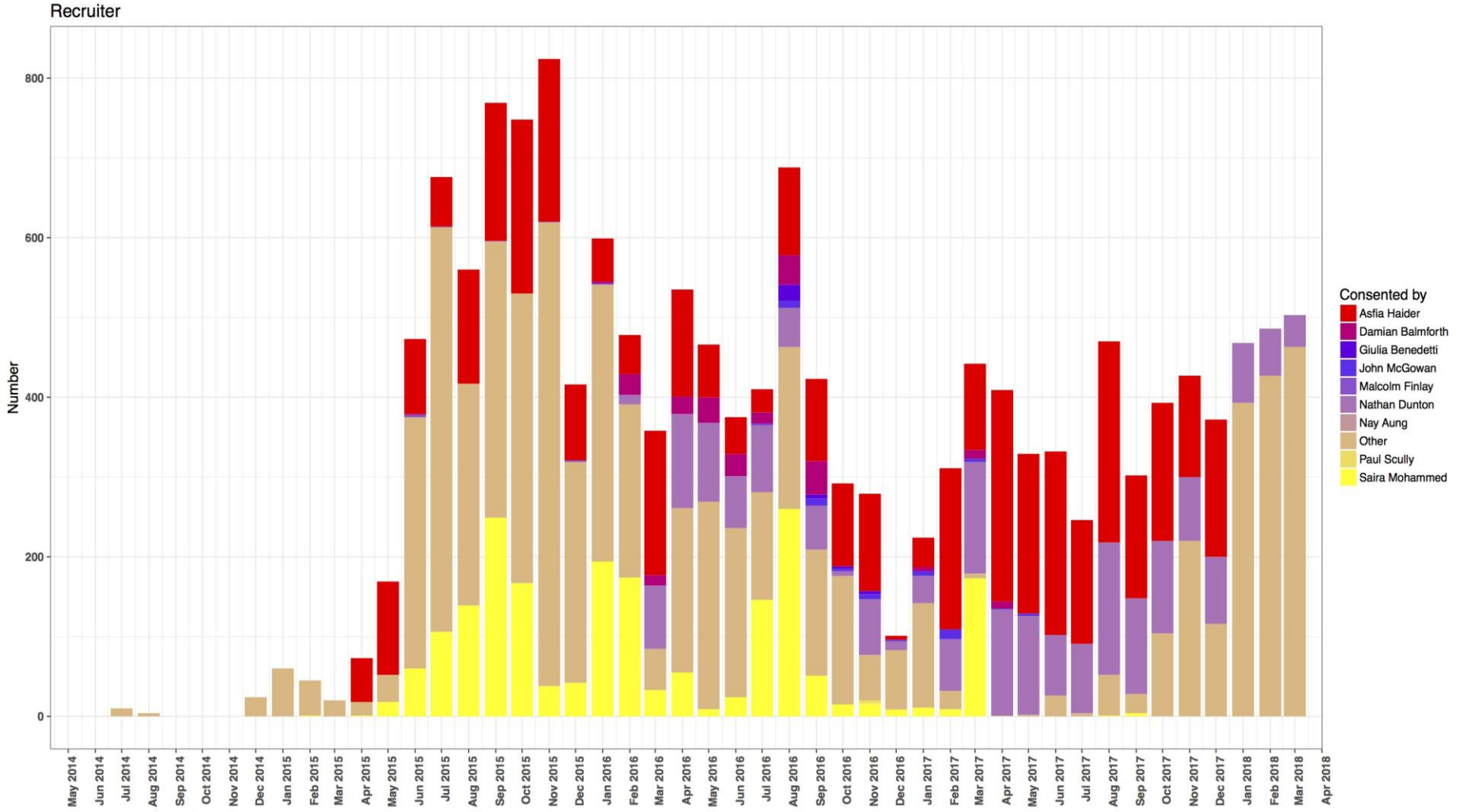
**Barts Health**  
NHS Trust

Barts BioResource cumulative recruitment

Total consent N = 16368; Total re-consent N = 985

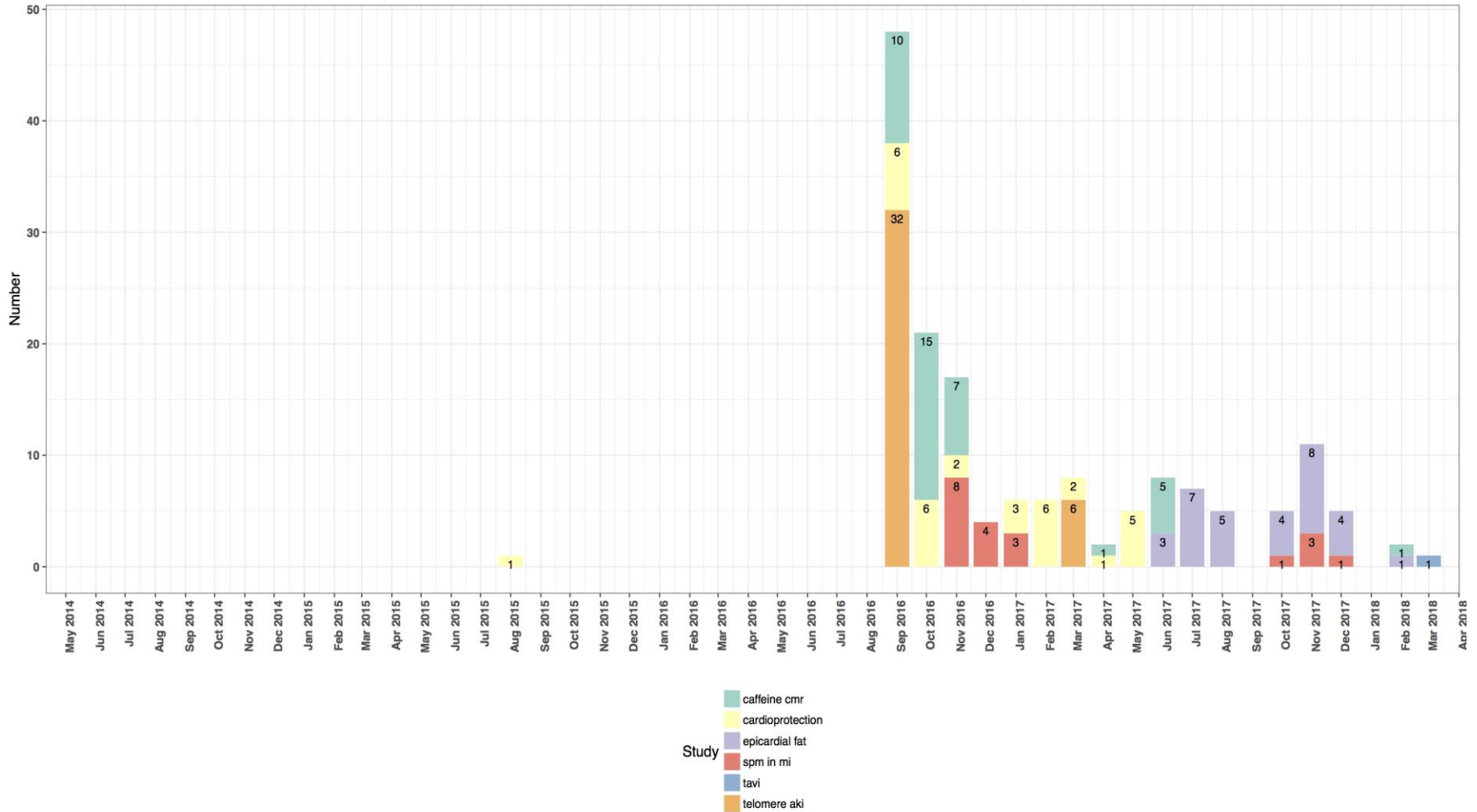


# Proportion of recruitment by researcher



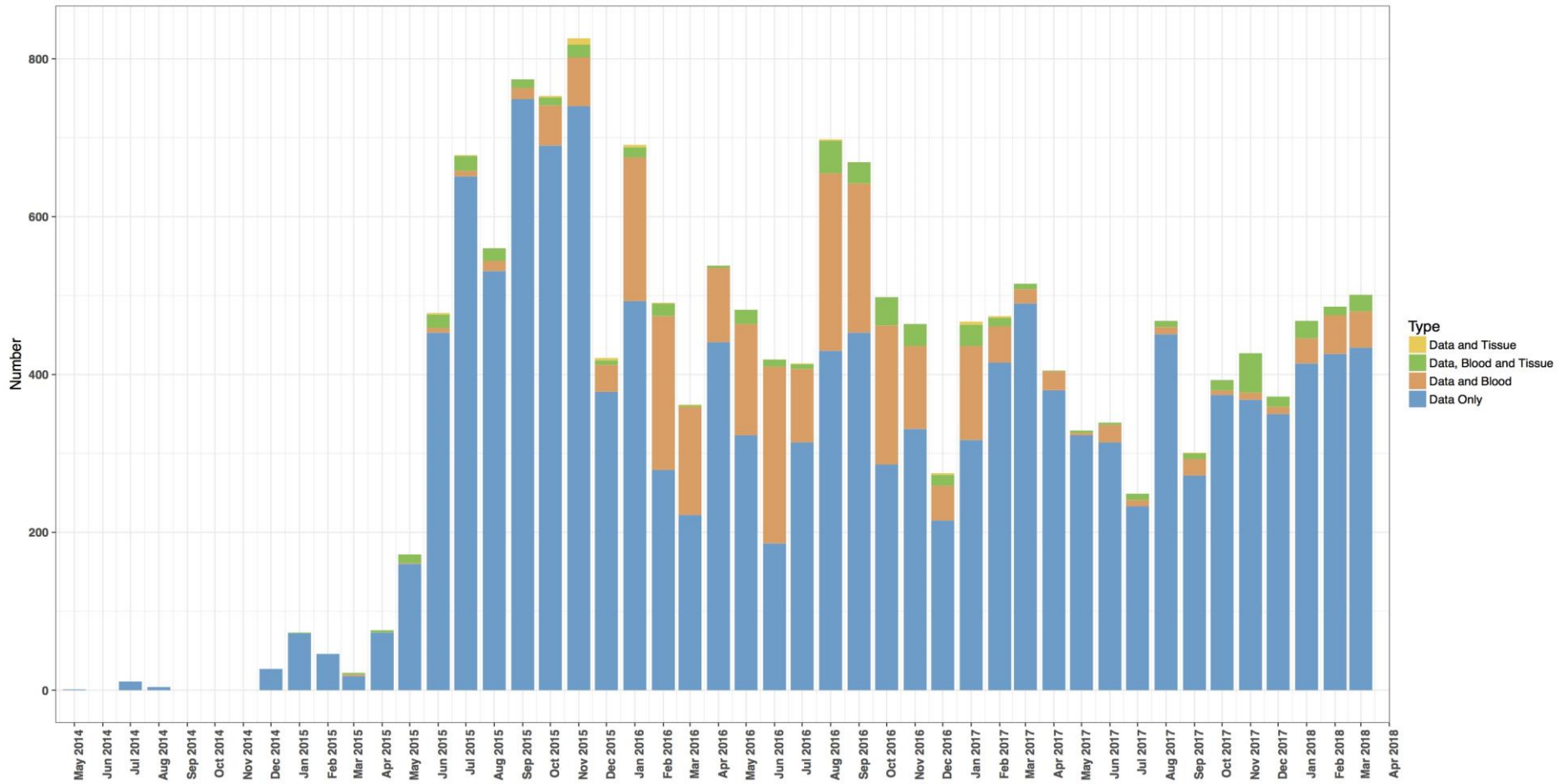
# Recruitment to sub-studies

Number of patients recruited into studies



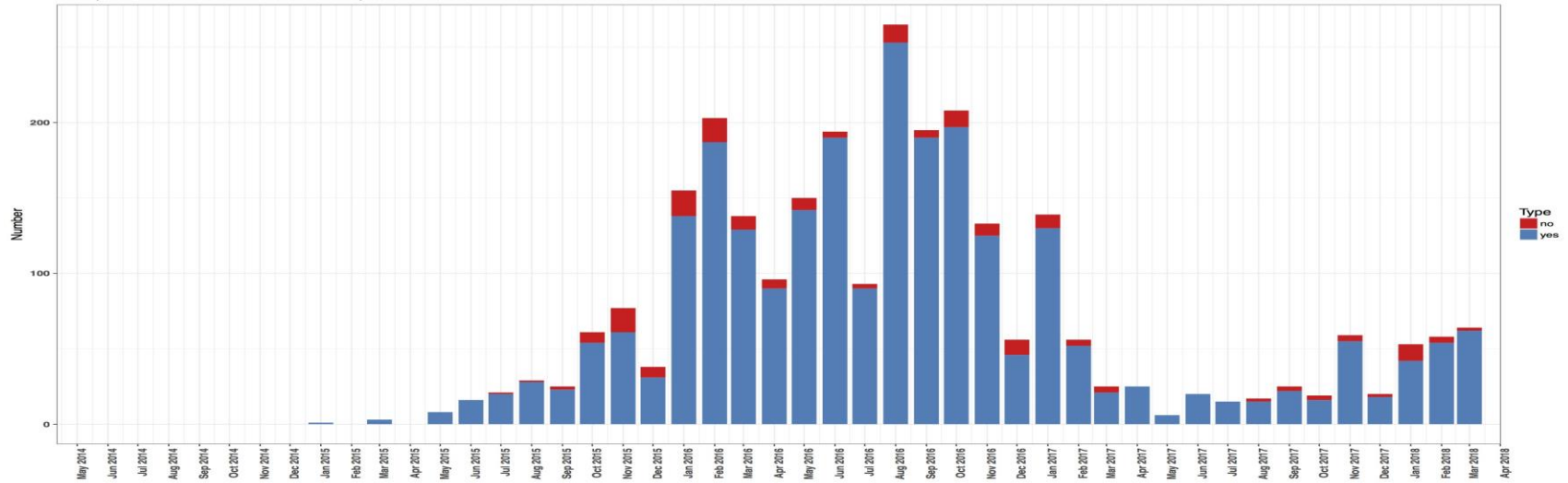
# Recruitment to each stratum

Type of consent

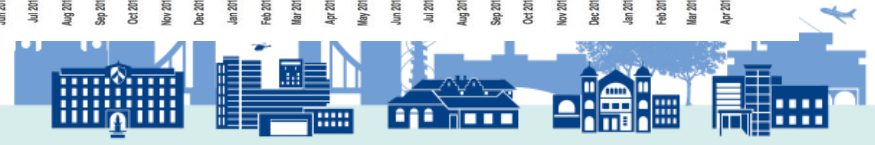
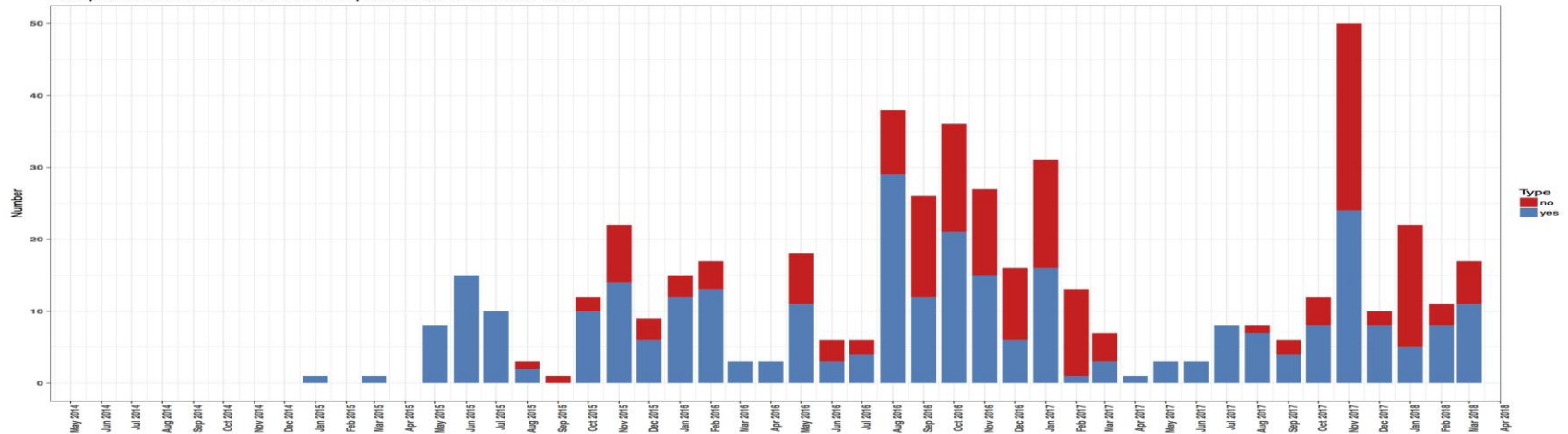


# Proportion of biosamples collected

Completed blood collection out of all patients consented for blood



Completed tissue collection out of all patients consented for tissue



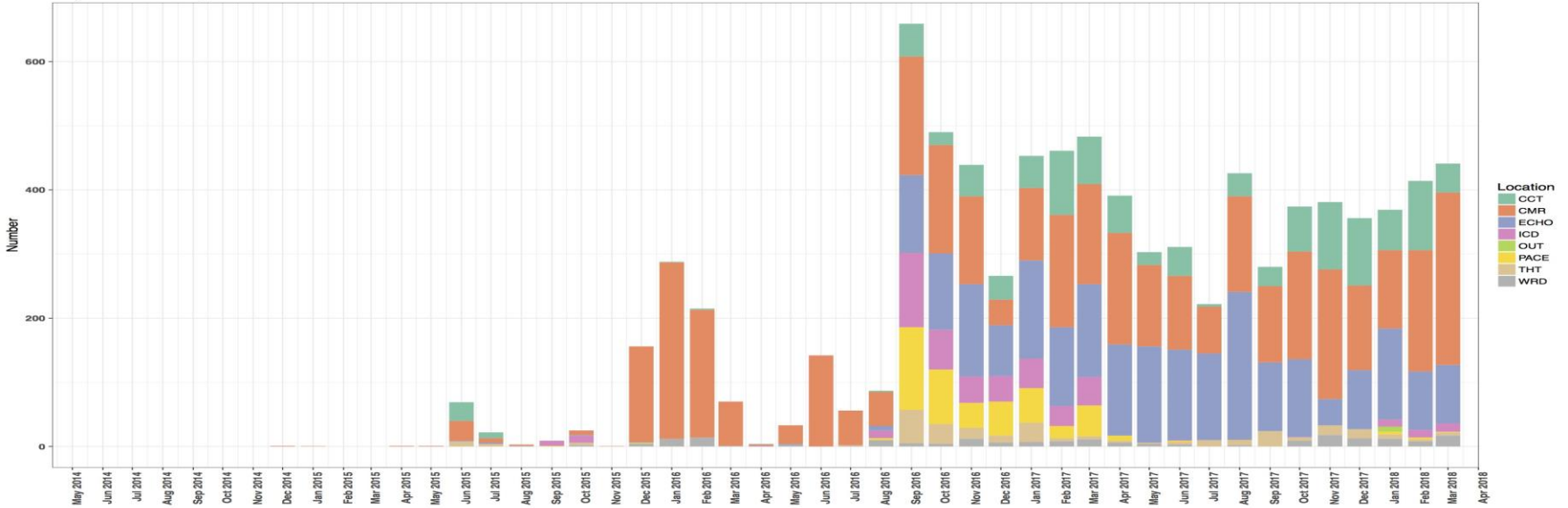


# Location of patient recruitment

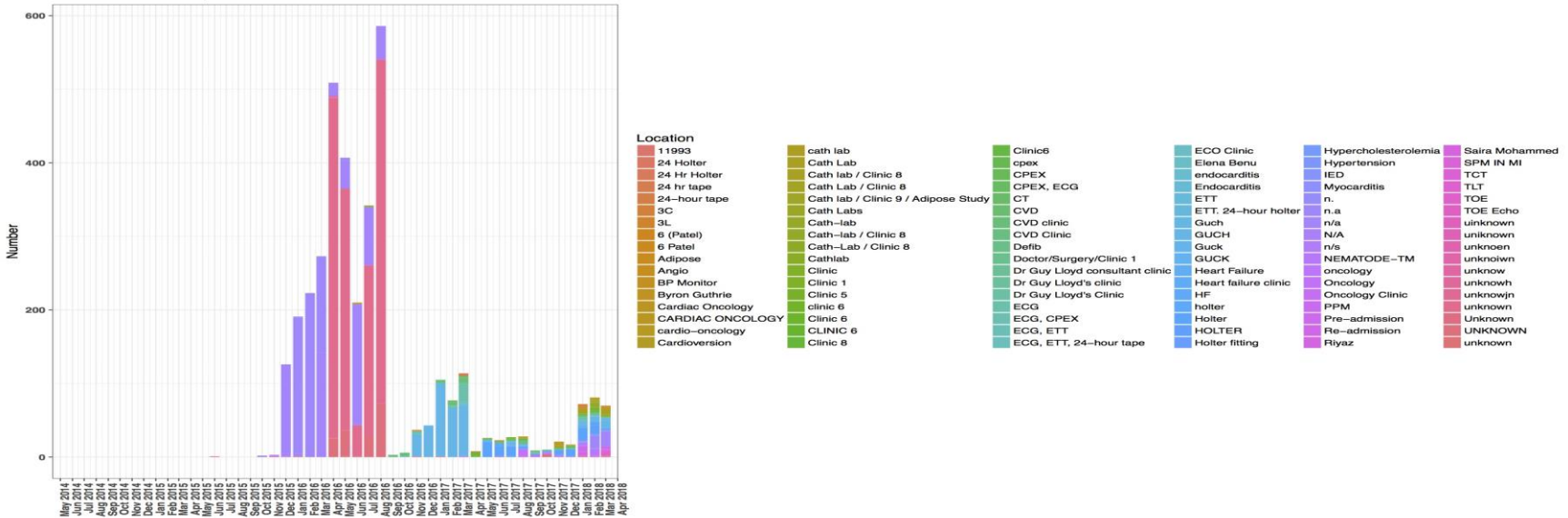


**Barts Health**  
NHS Trust

Major locations of patient



Other locations of patient

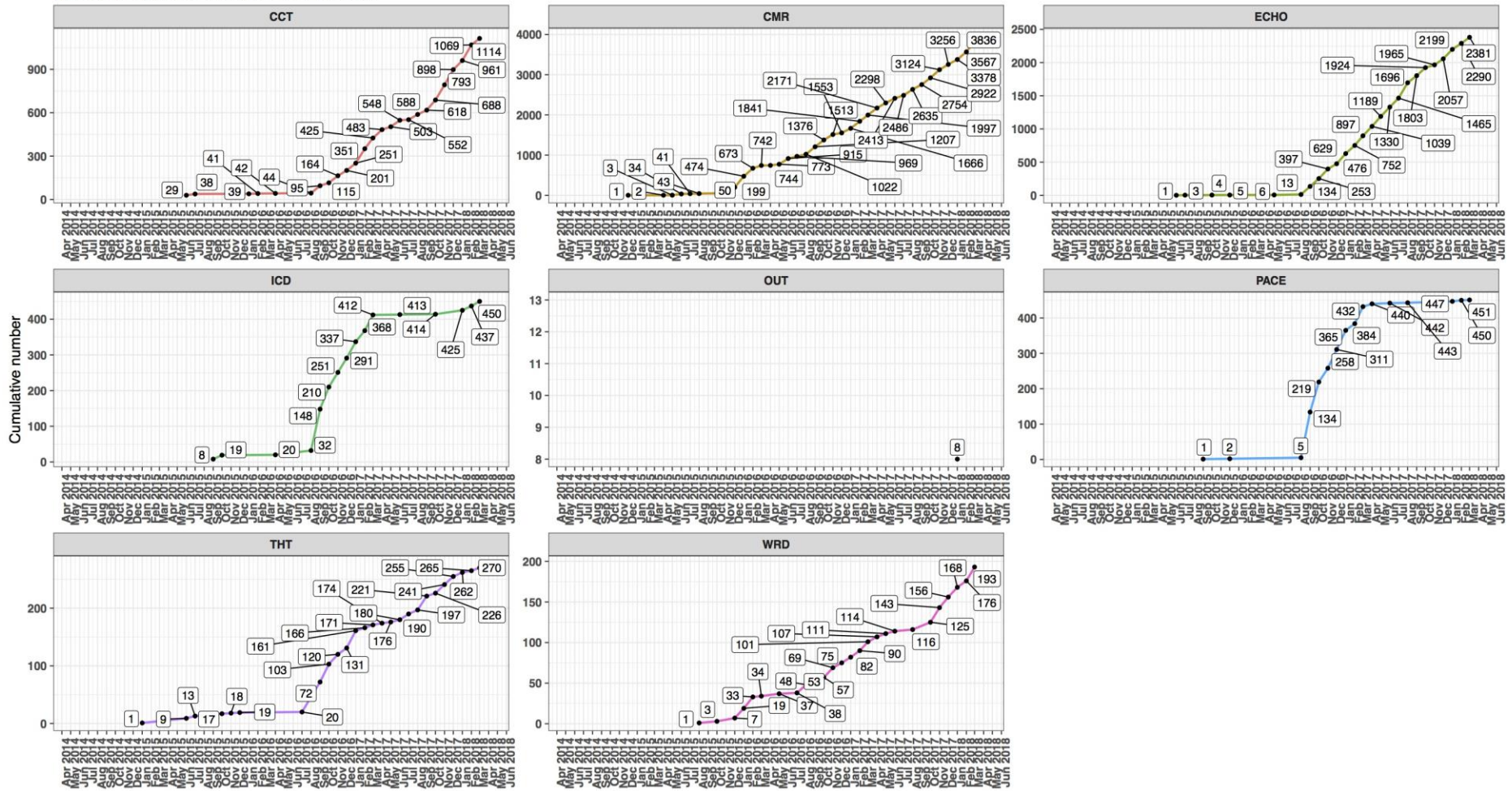


# Trends in recruitment locations

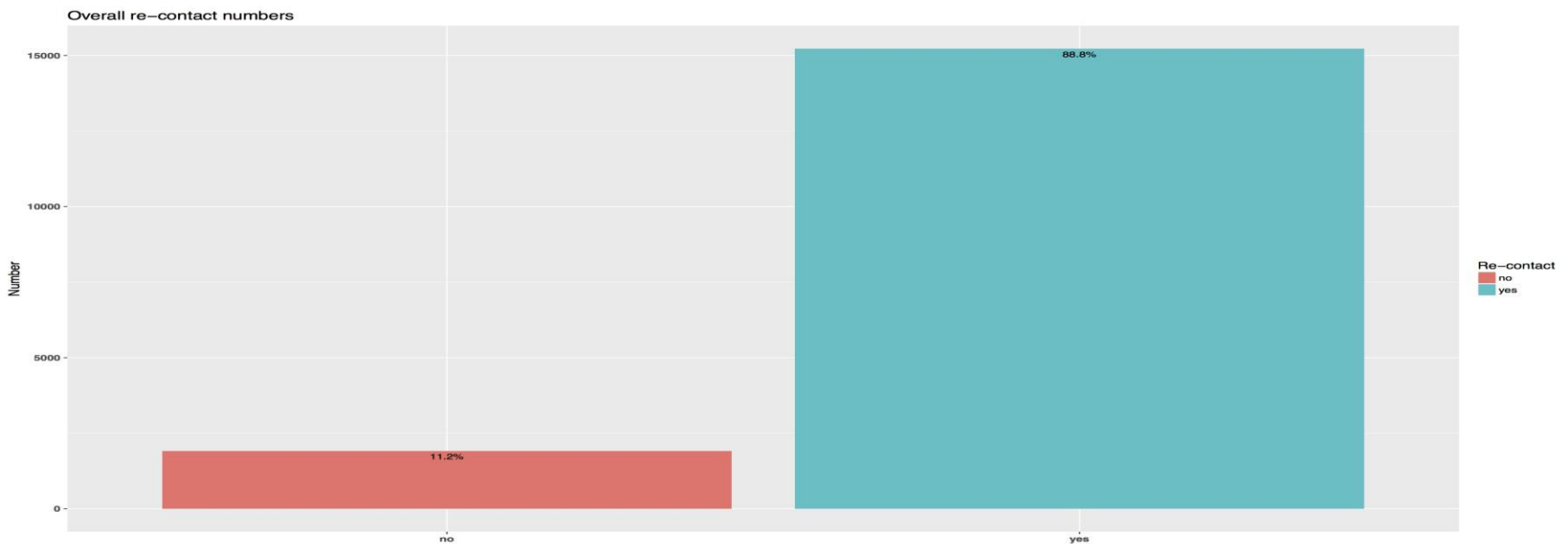
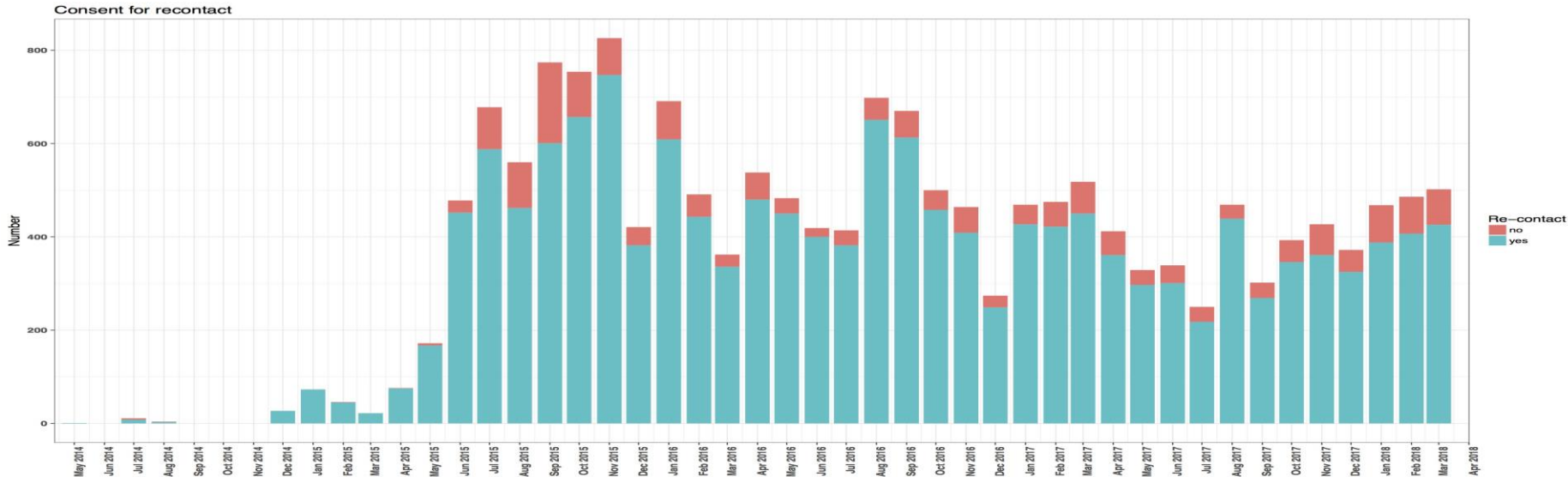


Barts Health  
NHS Trust

Recruitment trend of locations of consent

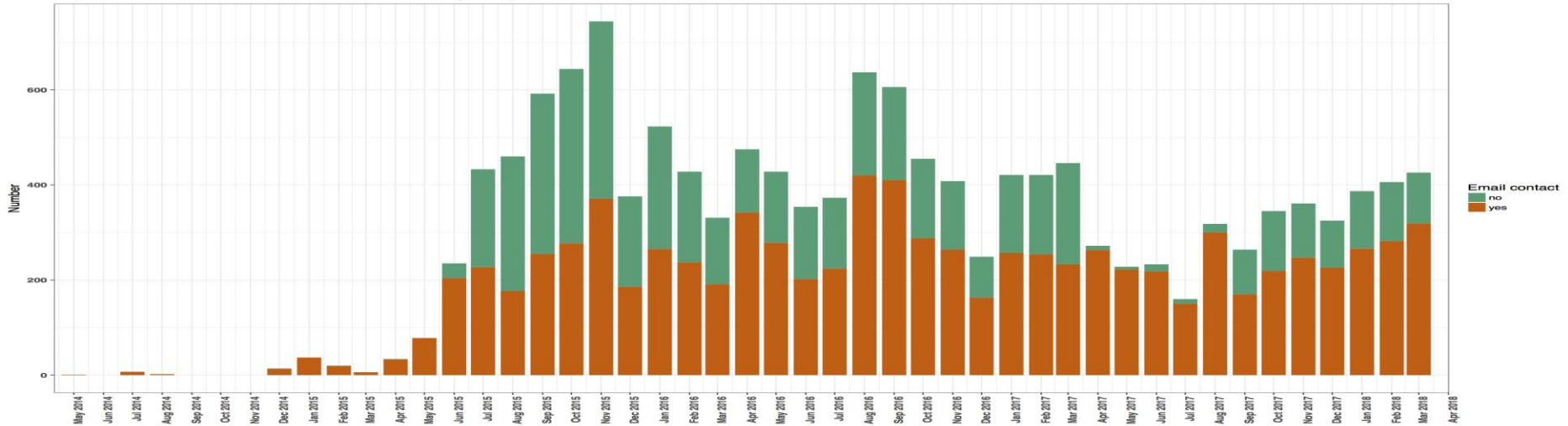


# Proportion of patients consenting to future contact

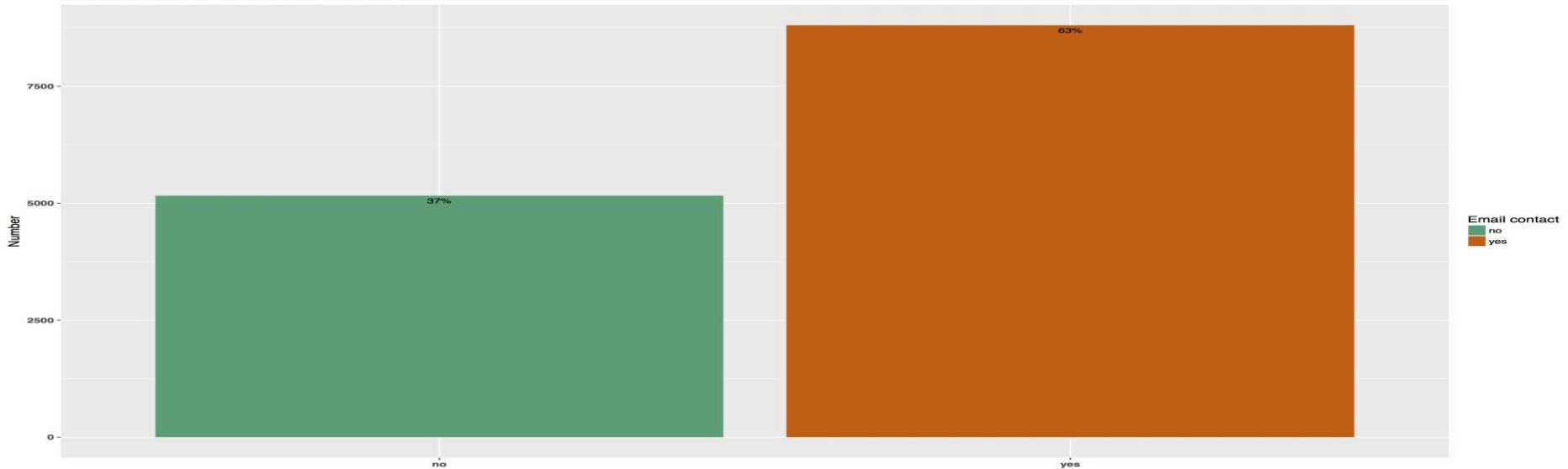


# Proportion of patients consenting to future contact via email

Consent for email contact out of all participants agreeing for recontact

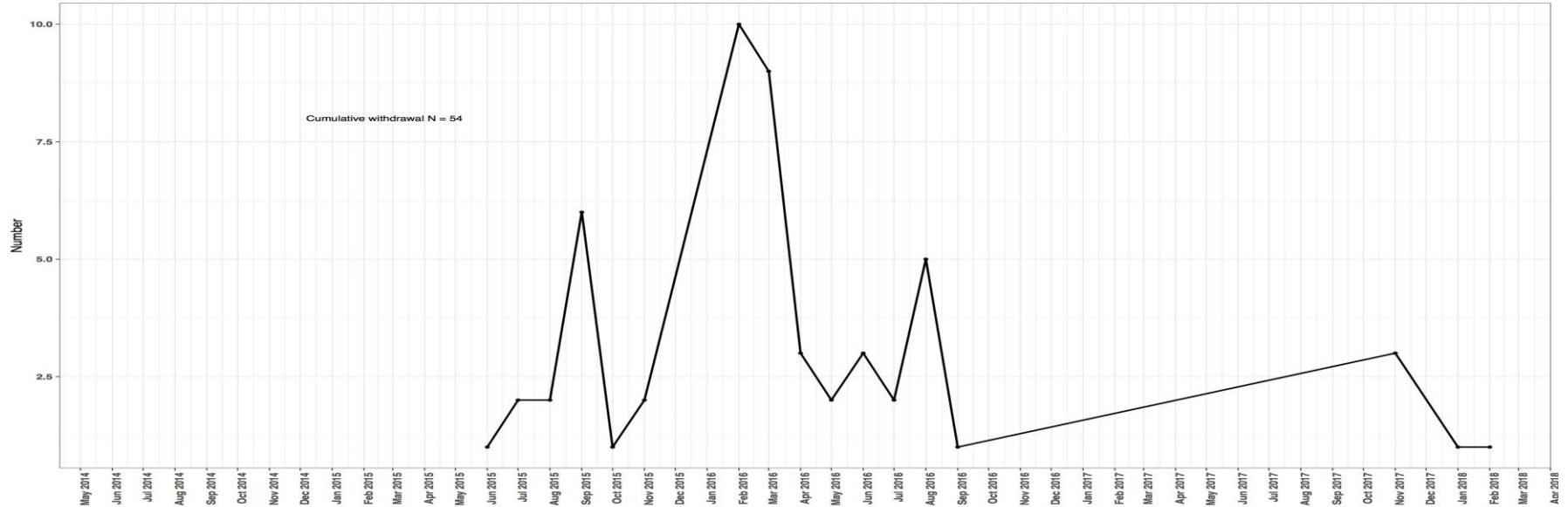


Overall consent for email contact numbers

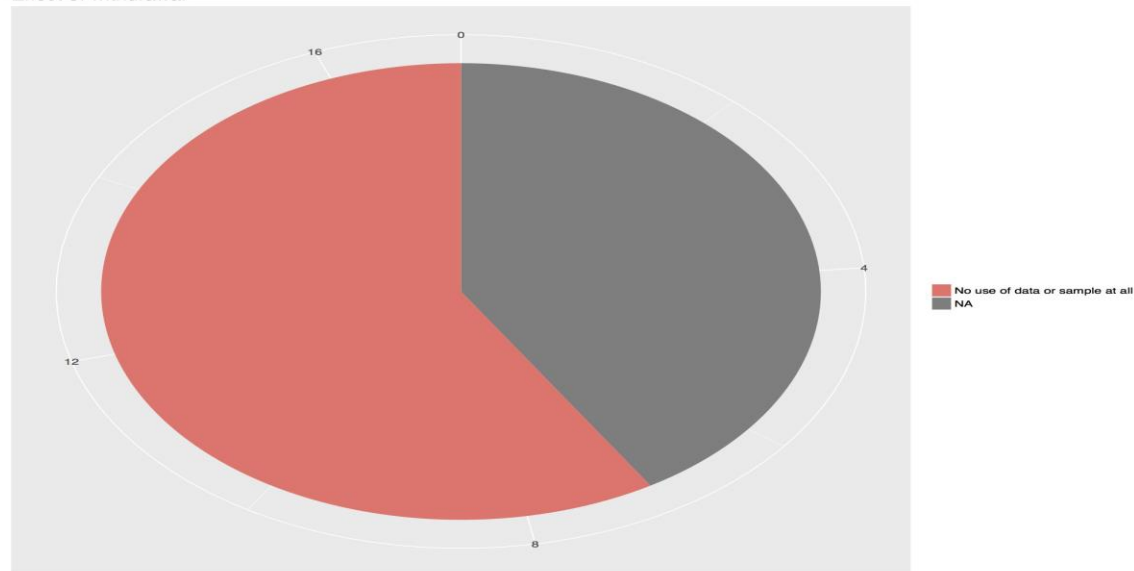


# Patient Withdrawal from the Barts BioResource

Patients withdrawn from Barts BioResource



Effect of withdrawal

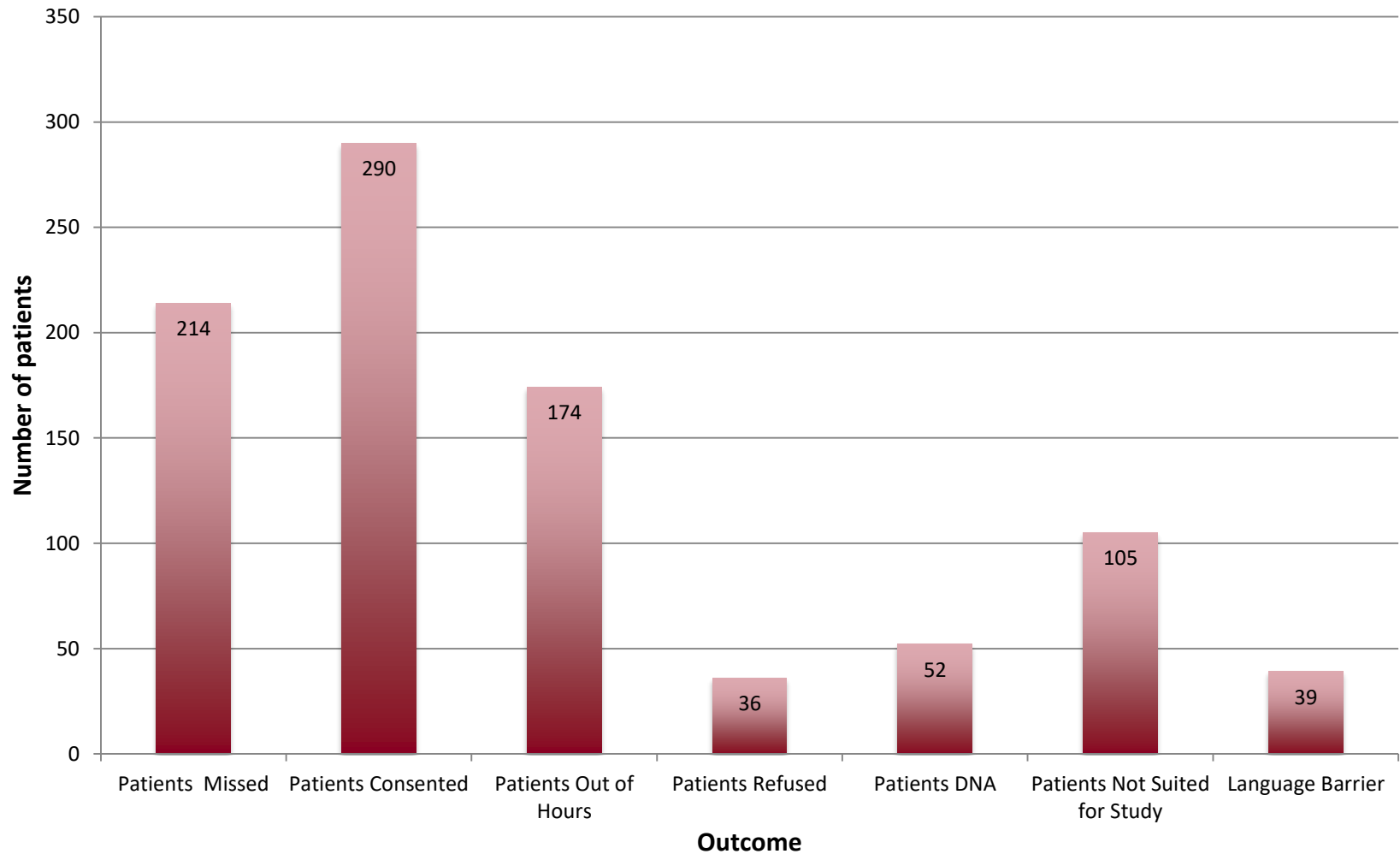


# Overview of March patients in the Cardiac Imaging Department

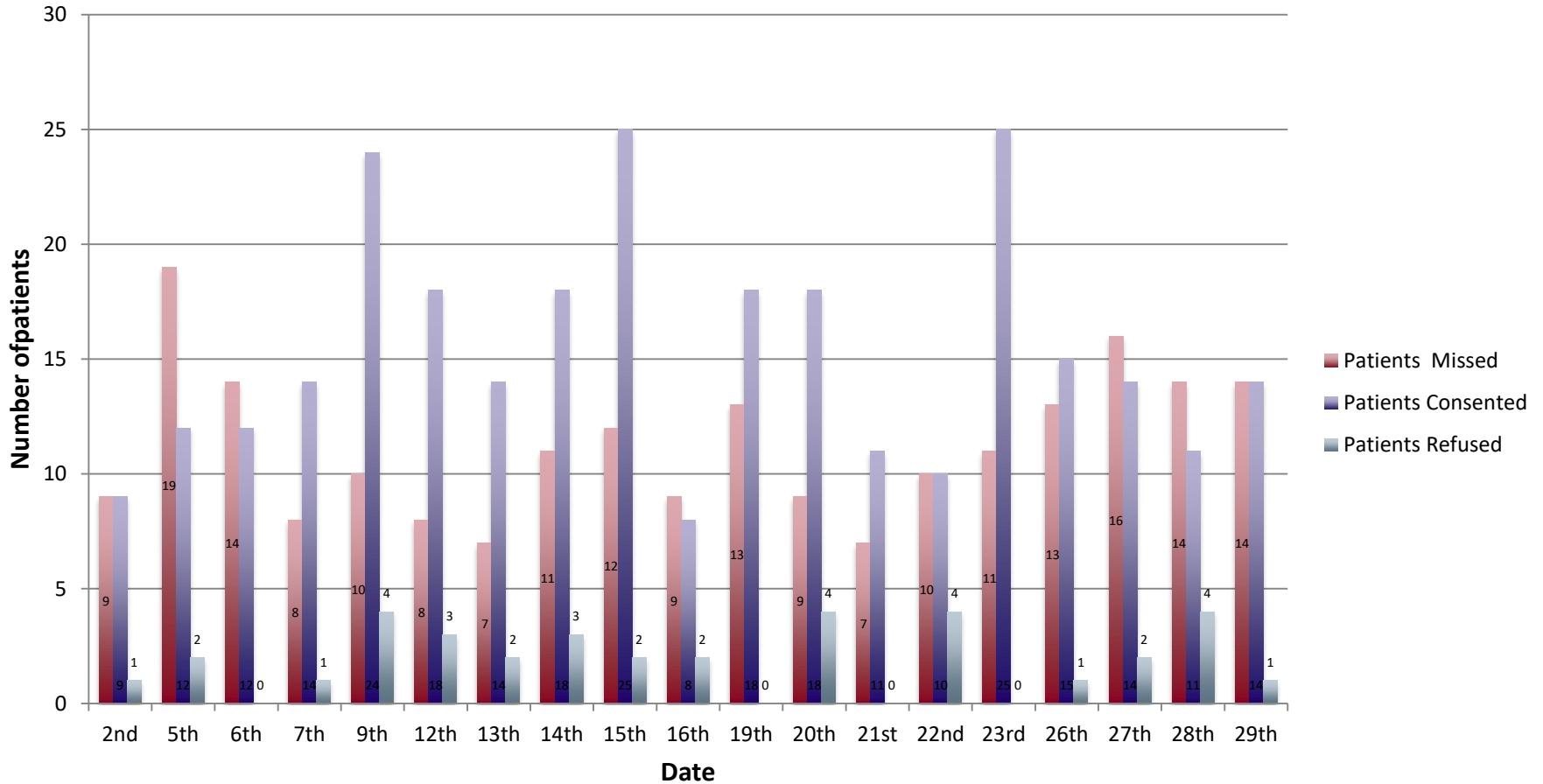


Barts Health

NHS Trust



# Proportion of patients missed, consented or refused during March in the Cardiac Imaging Department



# Number of patients consented versus patients that refused during March in the Cardiac Imaging Department

